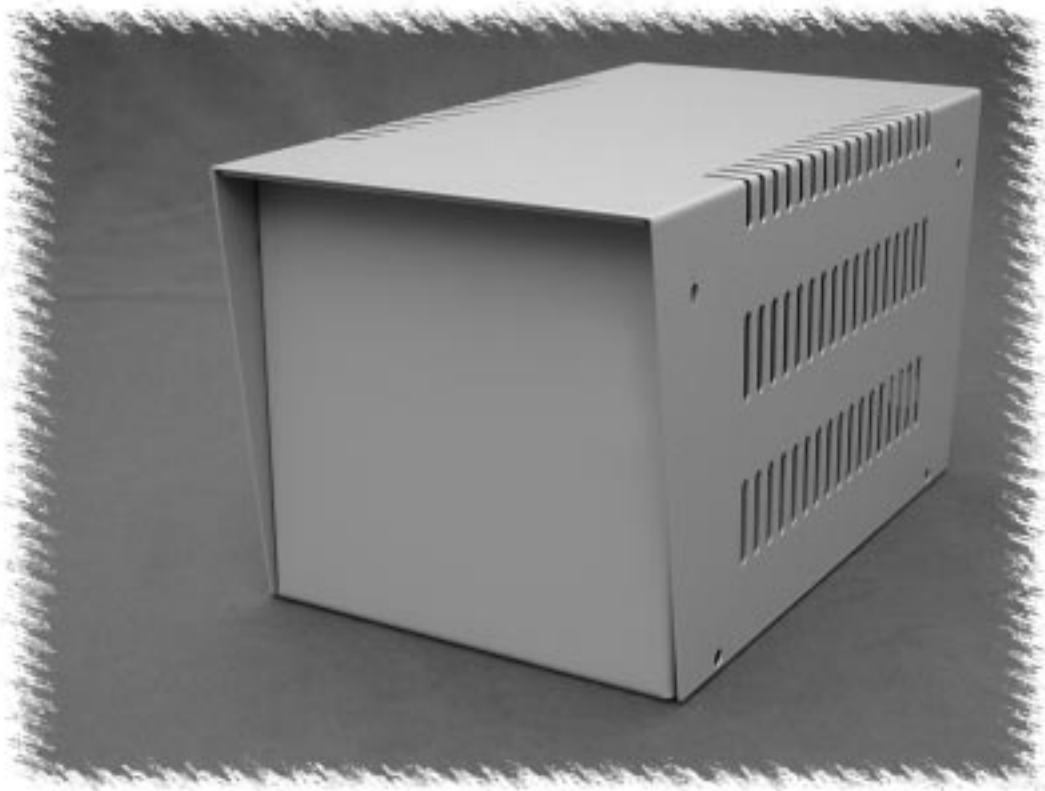


Heavy Duty Steel Instrument (1453 Series)



KEY FEATURES

- All steel, heavy duty construction designed to house heavy, heat producing items (example...power supplies).
- Bottom of unit is 16 gauge steel, top is 18 gauge steel.
- Finished in a rugged, contempora grey, textured powder finish.
- Top half is of an upside down "U" shape design for easy removal, bottom half is also "U" shaped but includes a fold on all sides including front & back for extra strength and mounting of top case.
- Top case section is heavily ventilated for excellent air circulation with an attractive slant (also doubles as a lifting area - both front & back). Top lip extends 0.75" (19 mm) on both sides adding 1.5" (38 mm) to the total depth.
- Bottom is solid except for 4 holes for mounting heavy duty rubber feet.
- Includes nickel plated self-tapping screws and screw on 0.75" (19 mm) high, rubber feet (**1421T7**).

Part Number	Units	Dimensions		
		H	W	D
1453B	inch	6	6	9.5
	mm	152	152	241
1453C	inch	7	7	11
	mm	178	178	279
1453K	inch	10	9	18
	mm	254	229	457
1453N	inch	12	12	19
	mm	305	305	483

Metal



CANADA
Guelph, Ontario (519) 822-2960
St. Laurent, Quebec (514) 343-9010
USA
Cheektowaga, NY (716) 651-0086

www.hammondmfg.com

EUROPE
Basingstoke, UK +44 1256 812812

AUSTRALASIA
Queenstown, SA, Australia +61 8 8240 2244